

C E P L

# COPPERCUT ELECTROSOFT

Private Limited

From concept to reality, we deliver advanced high-precision PCB solutions with cutting-edge technology, ensuring reliability and performance for next-gen electronics.

<https://www.coppercut.com>

**Coppercut**  
electrosoft pvt. ltd.





C E P L

**Coppercut**  
electrosoft pvt. ltd.

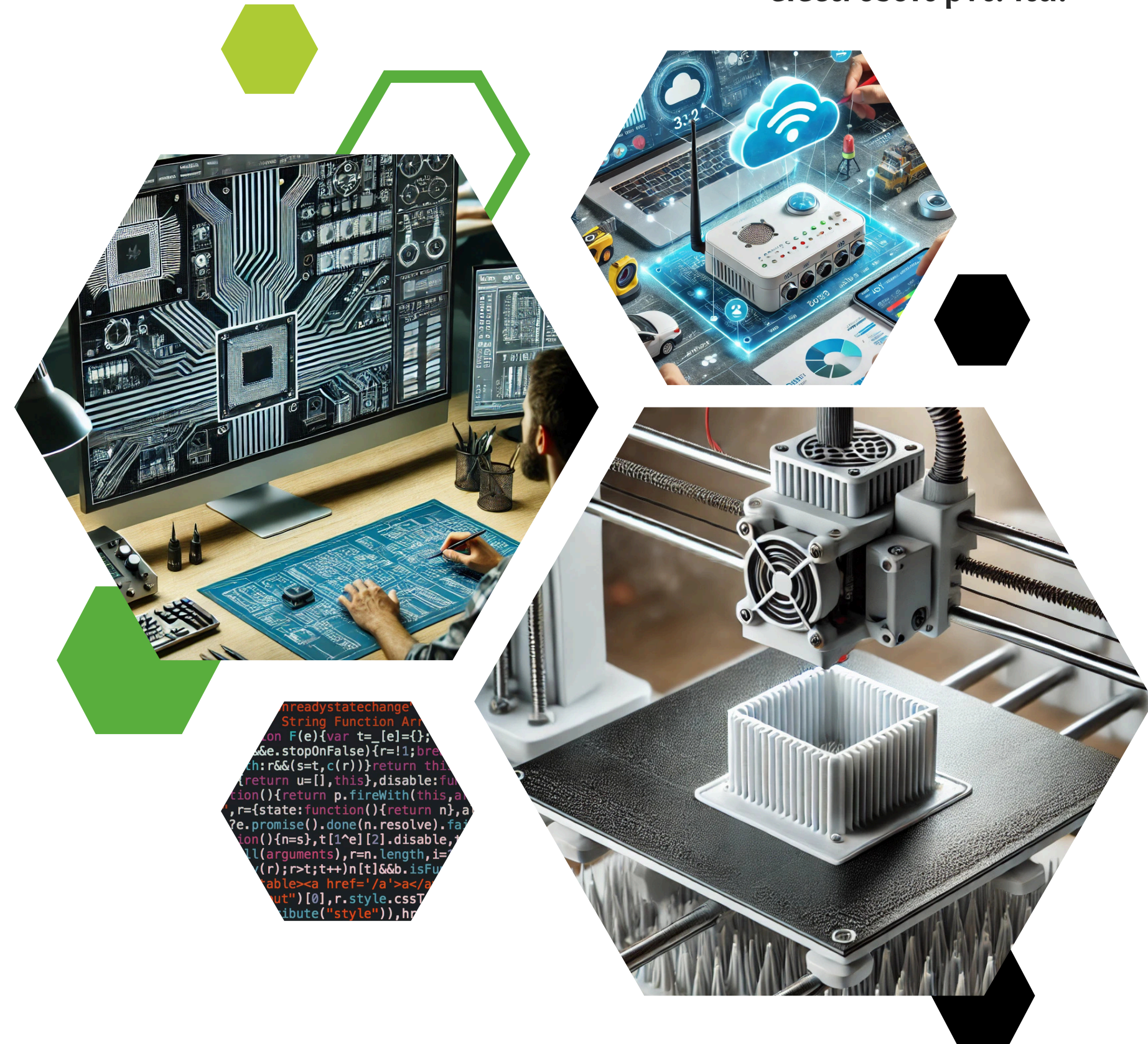
# Welcome To CEPL

We are a trusted leader in PCB design and prototyping, committed to delivering high-quality, innovative, and reliable solutions for cutting-edge electronics. With a passion for excellence, we transform ideas into reality, ensuring precision, performance, and efficiency in every project.

With 8 years of experience in development and 6 years of expertise in PCB designing, we have honed our skills to provide industry-leading solutions. Our advanced technology and customer-focused approach drive seamless integration and superior results across various industries.

**GST No.: 27AAACX3719J1Z4**

<https://www.coppercut.com>





# Coppercut's Vision And Mission

## Vision

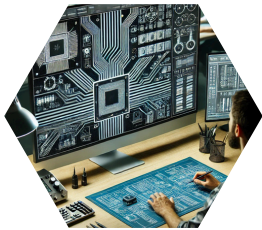
To revolutionize PCB design and prototyping by driving innovation, efficiency, and technological excellence, shaping the future of electronics with cutting-edge solutions.

## Mission

To deliver high-quality, customized PCB solutions that empower industries, ensuring precision, reliability, and seamless integration for next-generation technology.

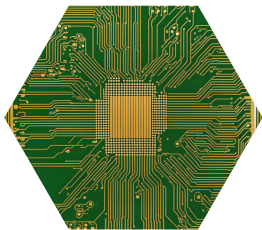


# Our Services



## PCB Design & Development

Custom circuit layouts with optimized routing and performance testing.



## PCB Manufacturing & Testing

High-speed PCB production with quality control and full performance testing.



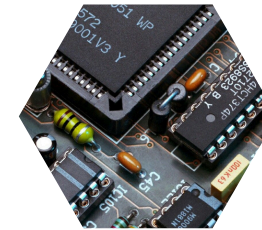
## IoT & Smart Device Solutions

Cloud-based automation, IoT hardware, and software integration.



## Product R&D & Consultation

End-to-end product development with expert consultation.



## PCB Prototyping & Testing

Rapid prototypes with validation for functionality and reliability.



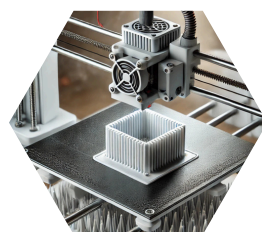
## Embedded System Solutions

Firmware, microcontroller programming, and real-time processing.



## Software & App Development

Custom web, mobile, and automation solutions for hardware.



## 3D Printing & Enclosure Design

Custom enclosures, product casings, and rapid prototyping.



C E P L

# Technology we use

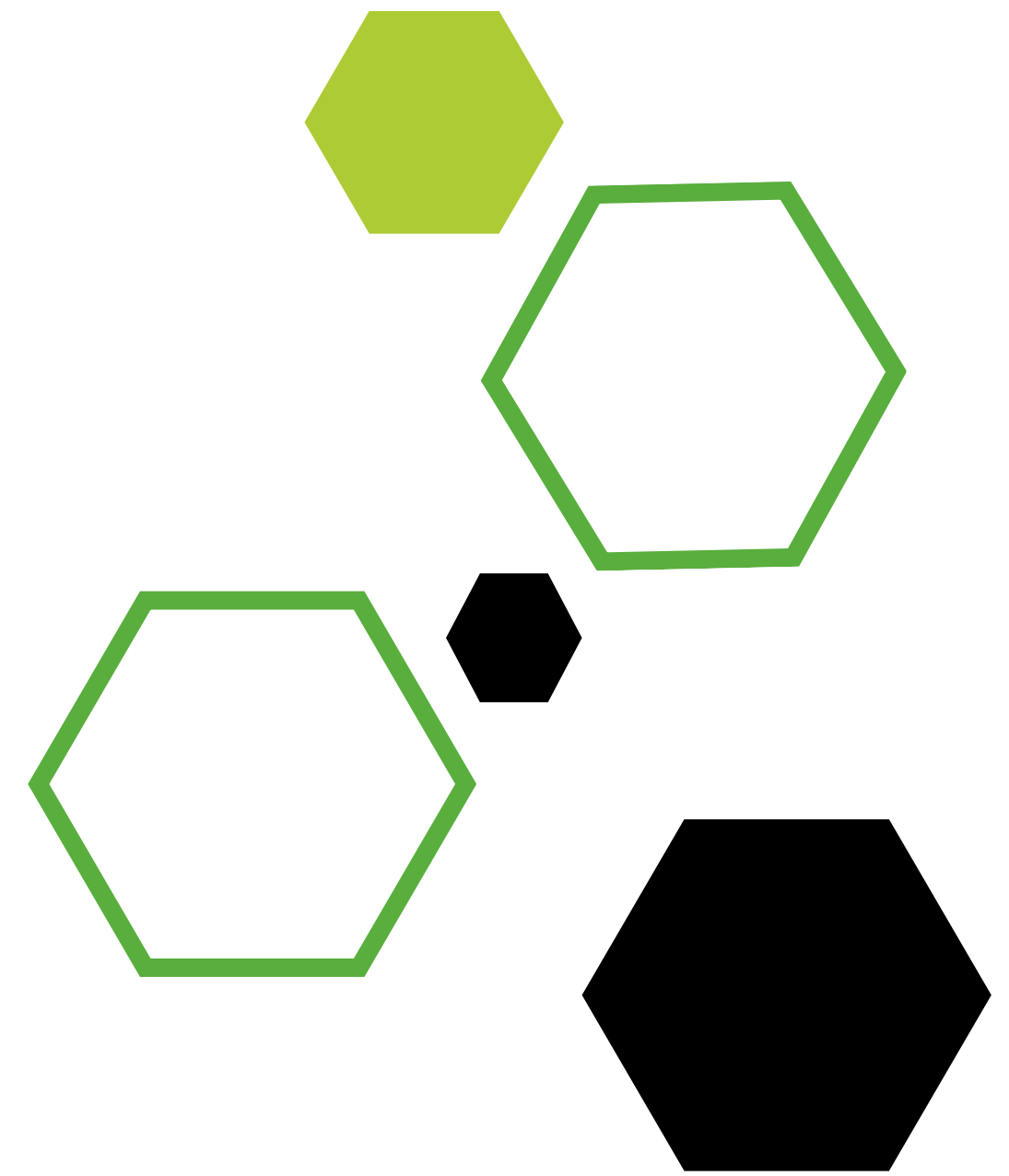
## For Your Business Development

We leverage cutting-edge technologies to deliver high-performance PCB design, prototyping, and manufacturing solutions, ensuring precision, reliability, and efficiency. Our expertise includes:

- **Advanced PCB Design Software – KiCad, Altium**
- **Embedded Systems & Firmware Development – C, C++, Embedded Python, FreeRTOS**
- **Hardware-Software Integration – IoT, AI-driven automation, Cloud Connectivity**
- **Rapid Prototyping & Manufacturing – High-speed PCB fabrication, Laser, CNC**
- **3D Printing Services – Custom enclosures designing, and rapid prototyping**
- **Custom Application Development – Web, Mobile, and Server-based solutions**

**CONNECT NOW**

**Coppercut**  
electrosoft pvt. ltd.



<https://www.coppercut.com>



# PCB Design & Development

Our PCB design and development services focus on creating high-performance, custom circuit board layouts tailored to your project needs. Using advanced design tools like KiCad, Altium etc., we ensure optimised routing, minimal signal interference, and superior power management. Our expertise covers single-layer, multi-layer, and high-frequency PCBs, ensuring reliability across industries like IoT, automotive, and consumer electronics.

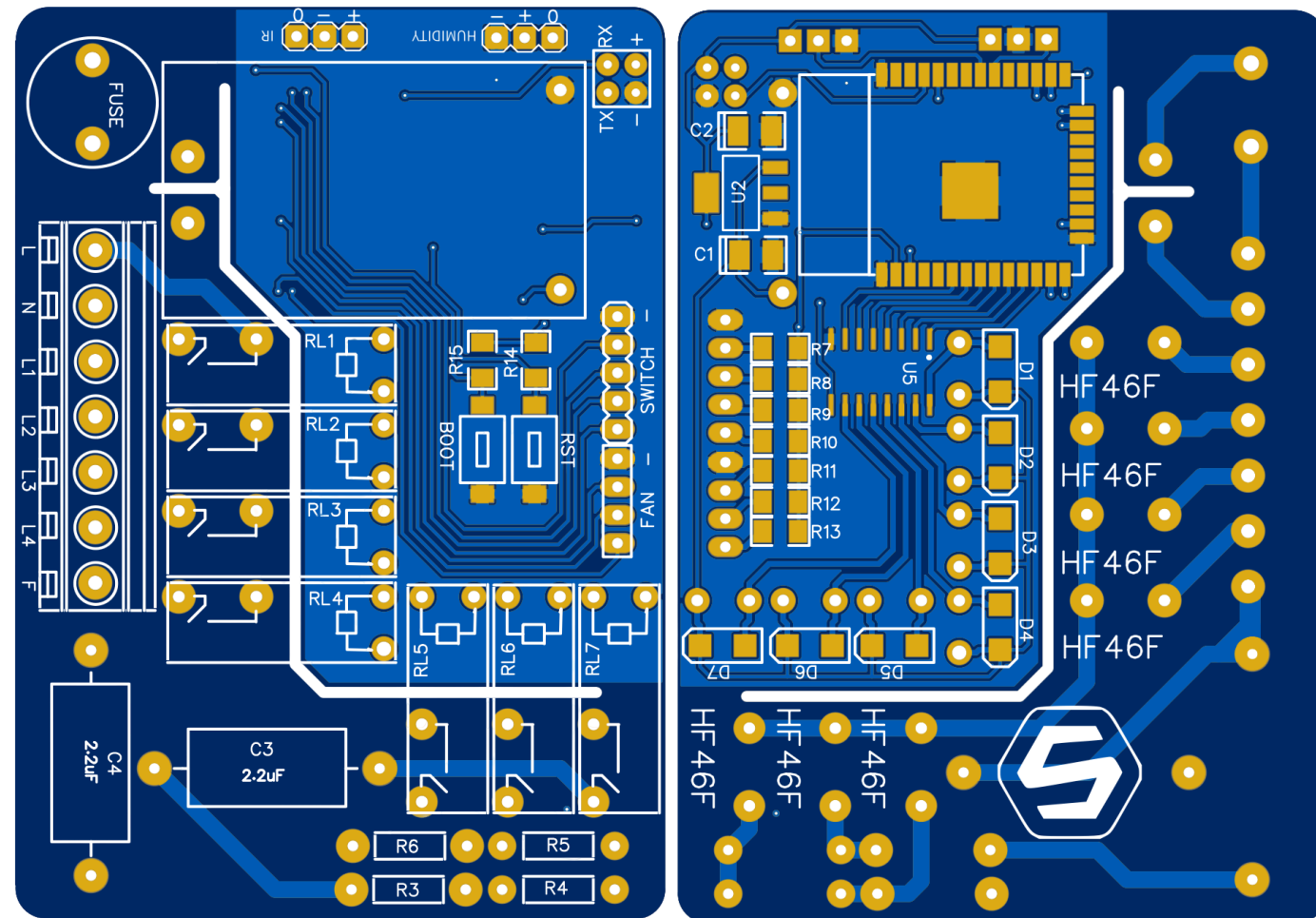
We ensure high-quality PCB designs with design rule checks (DRC) to validate manufacturability and performance before fabrication. Whether it's a flexible PCB, HDI design, or power-efficient layout, we deliver solutions that enhance product efficiency and longevity. Our iterative approach focuses on cost-effective designs, minimizing errors and optimizing production for seamless scalability.

<https://www.coppercut.com>

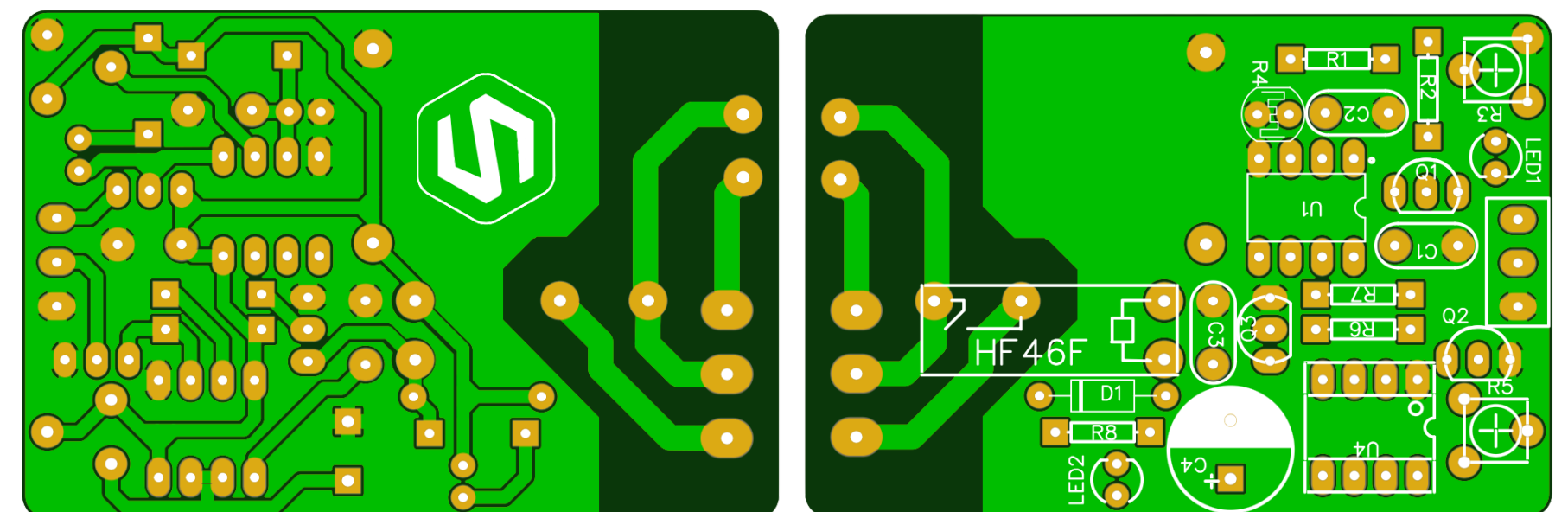
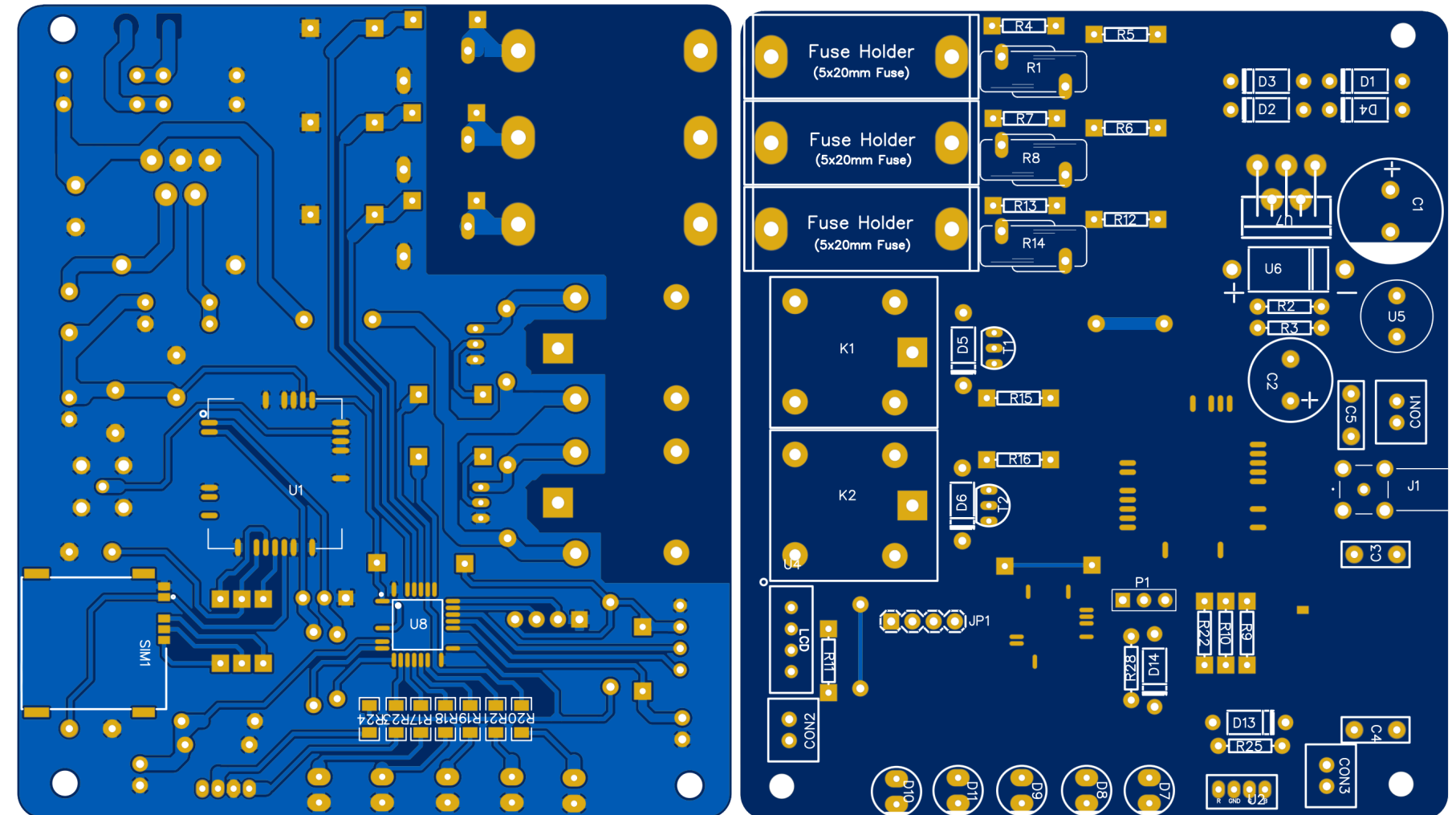




# PCB Design & Development Samples



<https://www.coppercut.com>





# PCB Prototyping & Testing

We provide fast and reliable PCB prototyping services, allowing clients to test designs before full-scale production. Our rapid prototyping ensures that circuit boards are fabricated and delivered in a short time, allowing for efficient testing and modifications. Whether you need through-hole, SMT, or mixed-technology PCBs, our solutions cater to diverse requirements.

Our rigorous testing processes include electrical testing, functional testing, and in-circuit testing (ICT) to verify board performance. We help identify potential issues, optimizing the design for real-world conditions. This ensures high reliability, better yield rates, and seamless integration into final products while reducing costly errors during mass production.

<https://www.coppercut.com>





# PCB Manufacturing & Testing

Our PCB manufacturing services focus on delivering high-quality, production-ready PCBs using precise fabrication techniques. We specialize in single-sided, double-sided, and metal-core PCBs, ensuring robust performance for various applications. With a commitment to accuracy, we ensure precise etching, solder mask application, and silk-screening for clear labeling and functionality. Our expertise caters to industries such as consumer electronics, industrial automation, and power electronics.

To maintain reliability and functionality, we conduct manual inspections and breadboard testing to verify circuit performance before deployment. Our hands-on testing approach ensures that each PCB meets design specifications and functional requirements, providing a dependable and cost-effective solution for your business needs.

<https://www.coppercut.com>





# Embedded System Solutions

Our embedded systems development services cover everything from firmware programming to real-time operating systems (RTOS), ensuring seamless hardware-software integration. We work with microcontrollers (MCUs), embedded processors, and sensor interfaces, providing solutions for applications in industrial automation, automotive, IoT, and smart electronics.

We specialize in low-power embedded designs, peripheral interfacing, and communication protocols such as UART, SPI, I2C, and CAN. Whether developing custom firmware, optimizing power consumption, or integrating wireless connectivity, we create efficient, high-performance embedded solutions tailored to industry needs.

<https://www.coppercut.com>





# IOT & Smart Device Solutions

We help businesses bring their products into the connected world with IoT and smart device solutions. Our expertise includes sensor integration, cloud connectivity, and real-time data processing, enabling devices to communicate efficiently and securely. From home automation to industrial IoT, our solutions ensure seamless device interactions.

We work with Wi-Fi, Bluetooth, LoRa, Zigbee, and cellular networks to build scalable IoT systems. Our services include firmware development, cloud integration, and AI-driven automation, allowing businesses to leverage real-time analytics and remote monitoring. With robust security measures, we ensure safe and reliable IoT deployments.

<https://www.coppercut.com>





# Software & App Development

We develop custom software and applications to enhance hardware control, data processing, and automation. Our solutions include web-based dashboards, mobile applications, and cloud-integrated software, allowing businesses to manage and control electronic devices remotely.

Our team specializes in firmware development, API integrations, and UI/UX optimization, ensuring seamless operation between hardware and software. From real-time monitoring tools to mobile apps for IoT devices, we create tailored solutions that enhance efficiency and connectivity.

<https://www.coppercut.com>

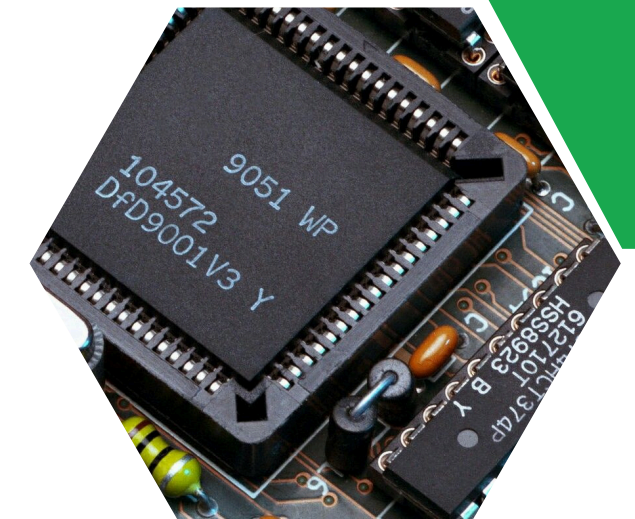




# Product R&D & Consultation

We provide end-to-end product development, from concept to final production. Our R&D team conducts feasibility studies, prototyping, and technical assessments to ensure success. With expertise in electronics, PCB design, and embedded systems, we offer strategic consultation for cost-effective, scalable, and manufacturable designs. Whether improving an existing product or developing a new one, we ensure precision and innovation.

Our process begins with understanding your idea and defining technical requirements, followed by **PCB schematic design, component selection, and layout development**. Once the design is finalized, we move to **prototyping, assembling, and functional testing** to validate performance. We also provide **custom firmware development, app integration** for hardware control, and **enclosure design**, ensuring seamless user experience. With 3D printing and rapid prototyping, we bring your hardware enclosures and casings to life before final production. From start to finish, we deliver a complete, **market-ready product** tailored to your business needs.





# 3D Printing & Enclosure Designing

We offer high-quality 3D printing services for custom enclosures, component housings, and rapid prototyping, helping clients bring their product concepts to life. Our expertise spans FDM, SLA, and SLS printing technologies, ensuring precision and durability in prototype development and final enclosures.

Our custom enclosure design services ensure that PCBs and embedded systems fit perfectly within aesthetic, functional, and durable casings. Whether for consumer electronics or industrial-grade products, we provide tailor-made, lightweight, and impact-resistant enclosures designed to withstand harsh environments.

<https://www.coppercut.com>



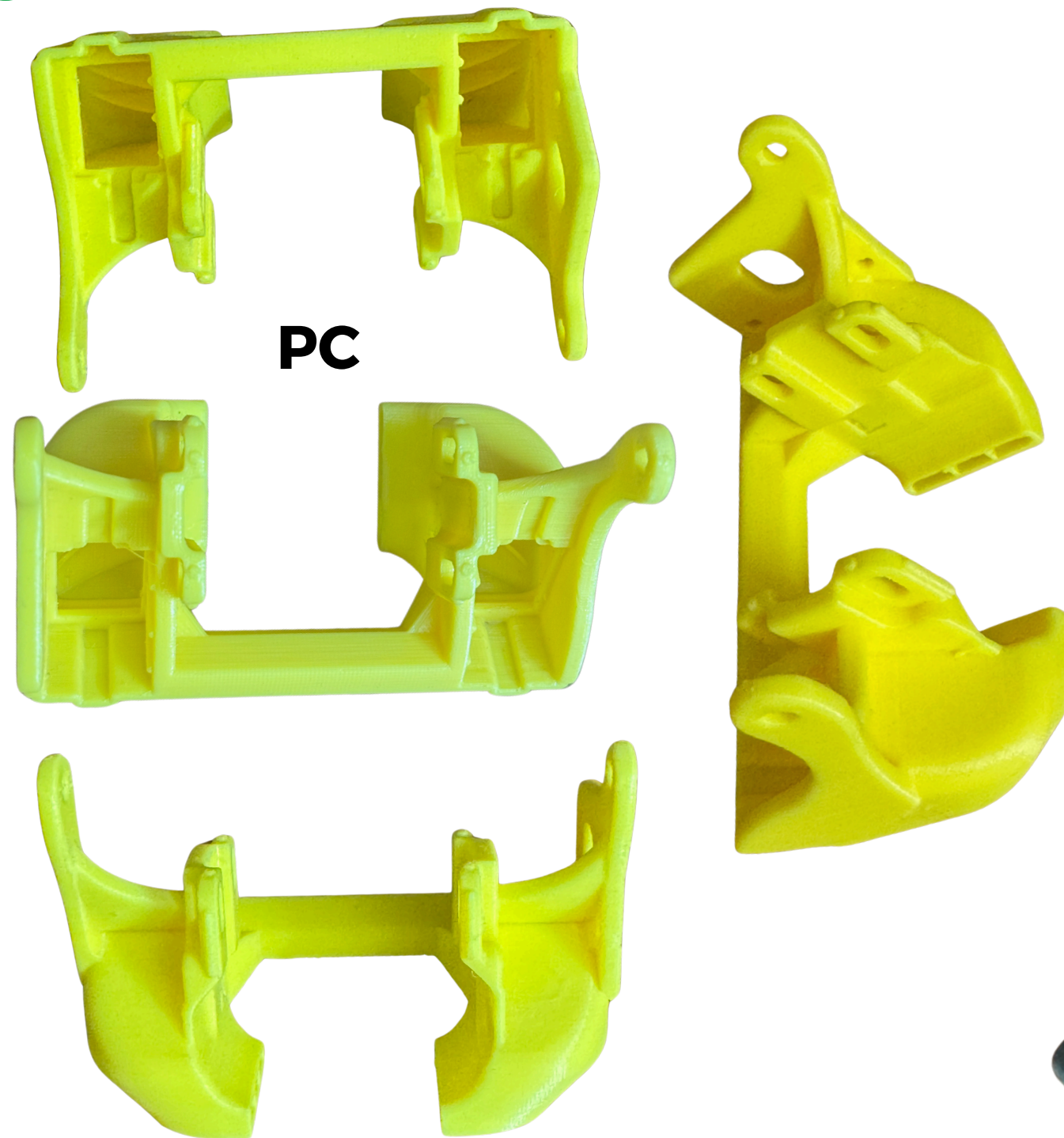


# 3D Printing & Enclosure

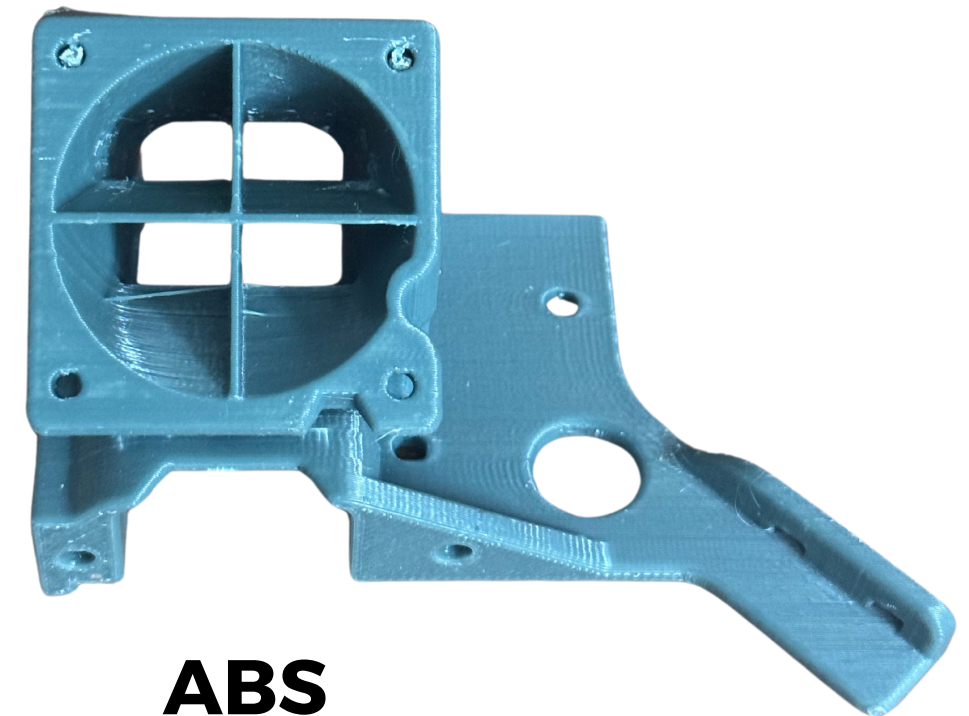
## Designing Samples



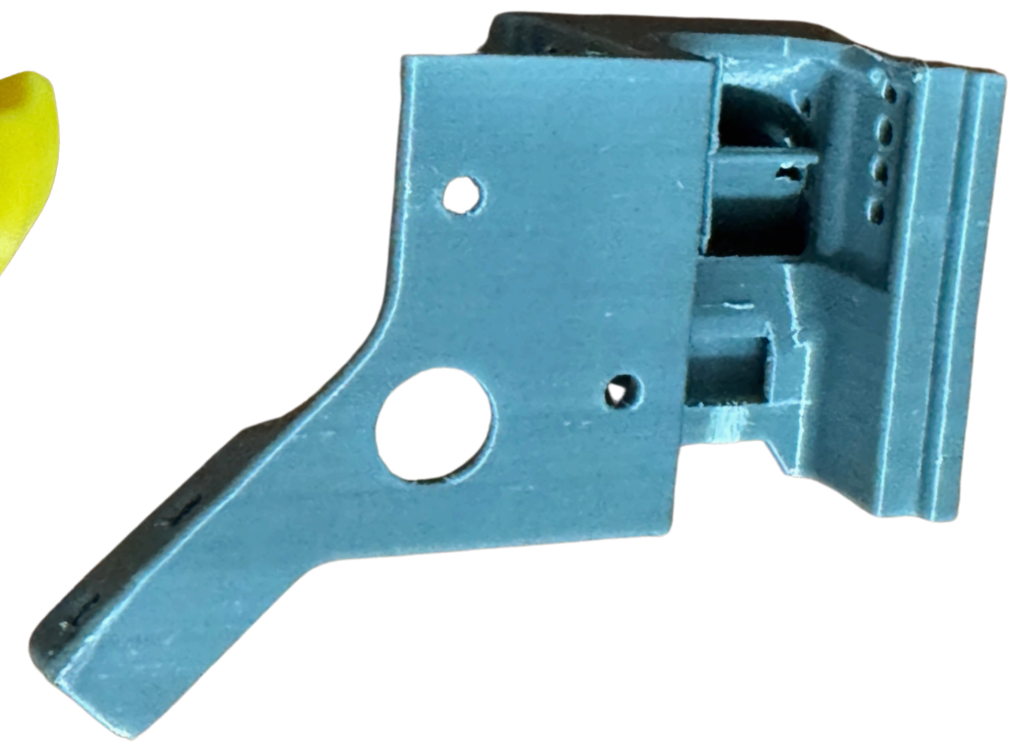
**PLA+**



**PC**

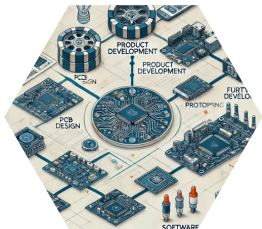
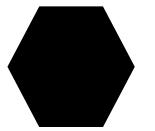


**ABS**



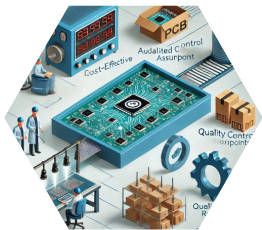


# Why Coppercut?



## Expertise & Innovation

With years of experience in PCB design, prototyping, and embedded solutions, we use cutting-edge technology to deliver high-quality, efficient, and reliable products.



## End-to-End Solutions

We handle everything from concept to final production, including PCB design, prototyping, firmware development, software integration, and 3D enclosure design, ensuring a seamless process.



## Cost-Effective & Scalable

Our solutions are affordable, scalable, and optimized for high performance, helping businesses reduce costs while maintaining superior quality and efficiency.



## Customer-Centric Approach

We prioritize client needs with customized solutions, fast turnaround times, technical support, and also long-term reliability, ensuring success in every project.



# Contact Us

Have questions or need assistance? We're here to help! Whether you're looking for custom PCB design, prototyping, embedded solutions, or product development, our team is ready to assist you.

Reach out to us for consultations, project inquiries, technical support, or partnership opportunities. We value your time and strive to provide prompt and efficient responses. Contact us today, and let's bring your ideas to life!

<https://www.coppercut.com>



**+91 9665 355569**



**hello@coppercut.com**



**www.coppercut.com**



**Parmar Industrial Complex, Off. No.: 103,  
MIDC, Chinchwad, Maharashtra - 411019**



C E P L

# COPPERCUT ELECTROSOFT

Private Limited

## Thank You...!!!!

We sincerely appreciate your time and trust in us. Your projects and challenges inspire us to deliver innovative, reliable, and high-quality solutions in PCB design, prototyping, embedded systems, and product development.

You are always welcome to share your ideas, projects, and technical challenges with us. Our team is here to provide expert guidance and effective solutions to help you achieve success.

Let's innovate together! 🚀

Feel free to reach out anytime – we're always here to help!

<https://www.coppercut.com> | +91 9665 355569 | [hello@coppercut.com](mailto:hello@coppercut.com)

